

# DIBAL

# 500 RANGE SCALES



# STAR SERIES





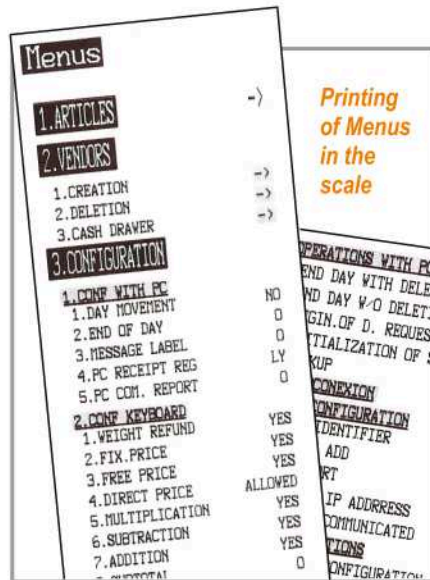
## Easy programming and operation

STAR SERIES scales have been designed thinking on the needs of **users** and **service departments**:

- "Drill-Down" Menus.
- Menus can be printed in the scale.
- Special keys for direct access to programming menus: change a price, include a new PLU or vendor, sales reports,...
- Direct access to 999 PLUs from keyboard.
- Search of PLUs by number.
- Search of PLUs by name: typing the initial characters of the name, the display shows the matching items.
- Programmable "Macros" system: recording of a sequence of keys, to create a "shortcut" to any task: change of batch number, access to programming parameters, receipt reopening, reports, etc.

Depending on format, STAR SERIES scales have as many macros available as direct PLU keys, and 10 specific macro keys.

- Security: configurable password system.

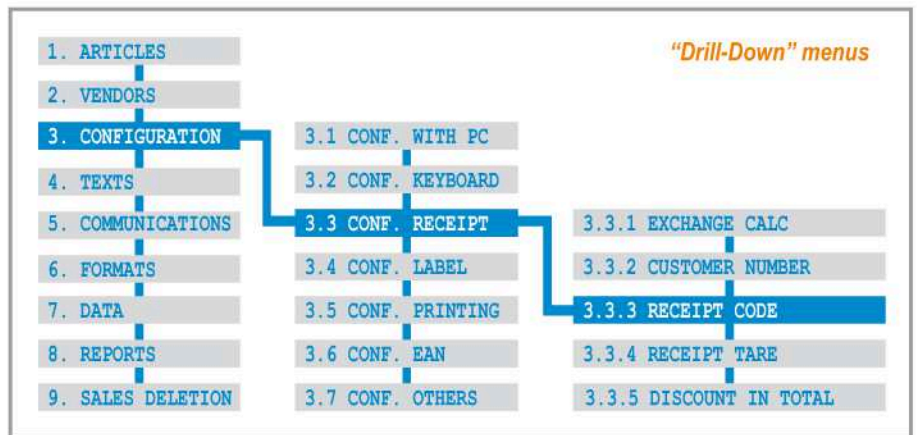
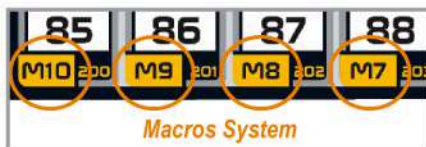


## Fiscal mode (dep. on countries)

When this option is activated, the scale will keep a **full copy of all receipts printed**, allows printing a list of them and keeps **consecutive numbers of receipts** throughout the fiscal period.

## Stocks management in the scale

- Entry of initial stock.
- Register of sales, deducted from stock.
- Display and print reports of stock by PLU.
- Adjustment of stock after physical inventory.
- Information can be sent to PC.

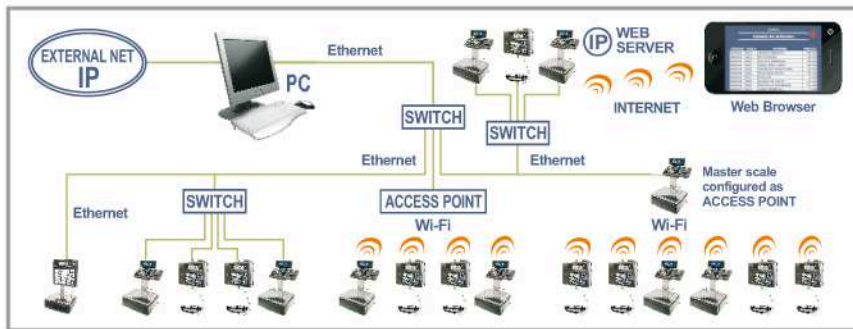
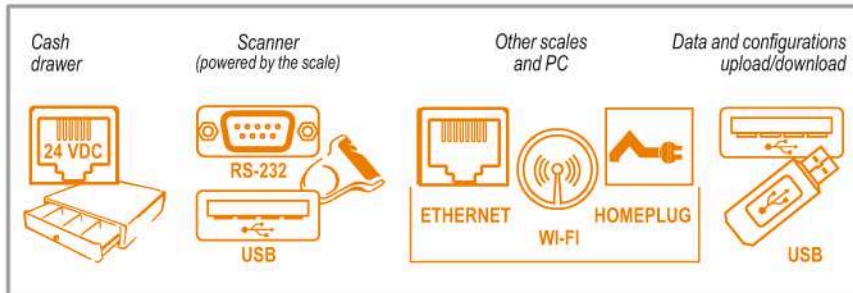


□ **Double Body**, with receipt printer, label/receipt printer or 2 printers: receipts + labels.

□ **Hanging ABS**, with receipt printer, label/receipt printer or 2 printers: receipts + labels.

## Communications

- **Interconnection and computer connection** of scales based on **Ethernet TCP/IP**, as standard, and **Wireless (Wi-Fi IEEE802.11) or Homeplug**, as an option.
- In Wi-Fi communications, **Access Point is not needed**, as the Wi-Fi internal module of scales can be configured as Access Point.
- **Interconnection** of scales, up to 16 per section, operates on a "master + slaves" or "master + submaster + slaves" configuration.
- **USB Port**: it allows to connect an external memory device, for copy or restore data and configurations of the scale, and dump sales data.



## Easy maintenance

- **Local/remote, with/without assistance.**
- **Internal firmware updateable from PC.**
- **On line checking and modification of technical parameters**, by means of optional DWS (Dibal Web Server).
- Access to all non metrological components of the scales **without breaking metrological seals.**

## Power supply - Rech. Batteries

- **Mains**: 110 or 230 VDC.
- **"Anti black-out" battery**, optional depending on models.
- **S-540 B model**, with long lasting **internal rechargeable battery**: up to **52 hours**. (calculated for 1.500 receipts, 3 articles per receipt).\*
- Optional **external battery** connector.

\* With segments display and backlight off. Load and range of rechargeable batteries can vary substantially depending on temperature, age and general state of batteries, printing frequency, networking, etc.

## DIMENSIONS



- **Hanging stainless steel**, with receipt printer, label/receipt printer, or 2 printers: receipts + labels.



- **Self-service**, with label printer.



### Versions (N° of Keys)

S-545	100
SELF-SERVICE	150
	208

**PC Software**

- Several **applications** are available, running on **Windows**, to connect **STAR SERIES** scales to PC:

**RMS: Retail Management Software**  
**DLD: Dibal Label Designer**

- **RMS+DLD:** programming the scales, design labels/receipts (DLD) and **commercial management** of data received from scales (lists, invoices, warehouses, customers, offers, etc).

**DFS: Dibal Friendly Software**  
**DLD: Dibal Label Designer**

- **DFS+DLD:** programming the scales, design labels/receipts (DLD) and reception of data with fully configurable lists. It stands out for its **ease of use, speed of communication and simultaneous connection with all scales.**

- Moreover, Dibal supplies **integration tools** running on Windows or Linux, to facilitate the integration with **customer's "Back-Office"**.

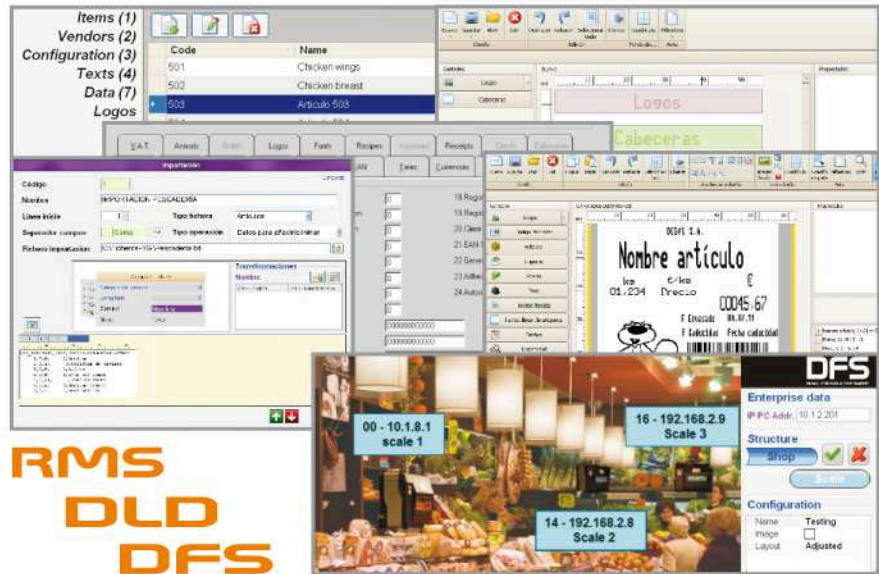
**Web Server**

- STAR SERIES** scales can incorporate **DIBAL WEB SERVER (DWS) embedded**, allowing access to each scale -through the IP address- from any computer or mobile device (smartphone, tablet,...) with web browser.

Access is protected by several levels of passwords.

- Thanks to **DWS**, many **parameters** of the scale can be remotely **checked and/or modified**:

- **Technical Service.** Consult and modification of technical parameters.
- **Sales Information.** Consult of total and detailed sales.
- **Information and Management.** "On-line" lists and modifications.



**Table of Models**

OPT. = Optional. \* Using Shift and Vendor keys. \*\* Except for Hanging ABS format.

MODEL	FORMAT					DISPLAY			PLUs			MACROS (maximum dep. on model and format)	VENDORS	PRINTER		COMMUNICATIONS				BATTERY						
	FLAT (F)	POLE (P)	DOUBLE BODY (DB)	HANGING ABS (HA)	HANG. ST. STEEL (HS)	SELF-SERVICE (SS)	SEGMENTS LCD	GRAPHIC L LCD	GRAPHIC XL LCD	7" COLOUR TFT	TOTAL PLUs			DIRECT PLUs (maximum dep. on format)	PAPER TYPE	SPEED maximum (mm/second)	LINERLESS	INTER-CONNECTION (ETHERNET)* SCALES	ETHERNET TCP/IP		WI-FI IEEE 802.11	HOMEPLUG	SCANNER	CASH DRAWER	USB PORT	HIGH CAPACITY + EXTERNAL BAT. CONNECT.
S-540			•	•	•	•	OPT.	OPT.			10.000	60x2 + 19x2*	60	20	Receipt	100	16	•	OPT.	OPT.	•	•	•	•	OPT.**	
S-540 B			•				•	OPT.	OPT.		10.000	60x2 + 19x2*	60	20	Receipt	60	16	•	OPT.		•	•	•	•	•	
S-540 COLOUR			•	•				OPT.	OPT.	•	10.000	60x2 + 19x2*	60	20	Receipt	100	16	•	OPT.	OPT.	•	•	•	•	OPT.	
S-545	•	•	•	•	•	•	•	OPT.	OPT.		10.000	30x2 + 19x2* (F) 60x2 + 19x2* (HA, HS) 90x2 + 19x2* (P) 95x2 + 19x2* (DB) 100-150-208 (SS)	30 (F) 60 (HA, HS) 90 (P) 95 (DB) 100 (SS)	20	Label or Receipt (only Label in Self-service format)	100	OPT.	16	•	OPT.	OPT.	•	•	•	•	OPT.**
S-545 COLOUR	•	•	•					OPT.	OPT.	•	10.000	60x2 + 19x2* (HS) 90x2 + 19x2* (P) 95x2 + 19x2* (DB)	60 (HS) 90 (P) 95 (DB)	20	Label or Receipt	100	OPT.	16	•	OPT.	OPT.	•	•	•	OPT.	
S-547			•	•	•	•	•	OPT.	OPT.		10.000	60x2 + 19x2*	60	20	2 Printers: L & R	100	OPT.	16	•	OPT.	OPT.	•	•	•	OPT.**	
S-547 COLOUR			•	•				OPT.	OPT.	•	10.000	60x2 + 19x2*	60	20	2 Printers: L & R	100	OPT.	16	•	OPT.	OPT.	•	•	•	OPT.	